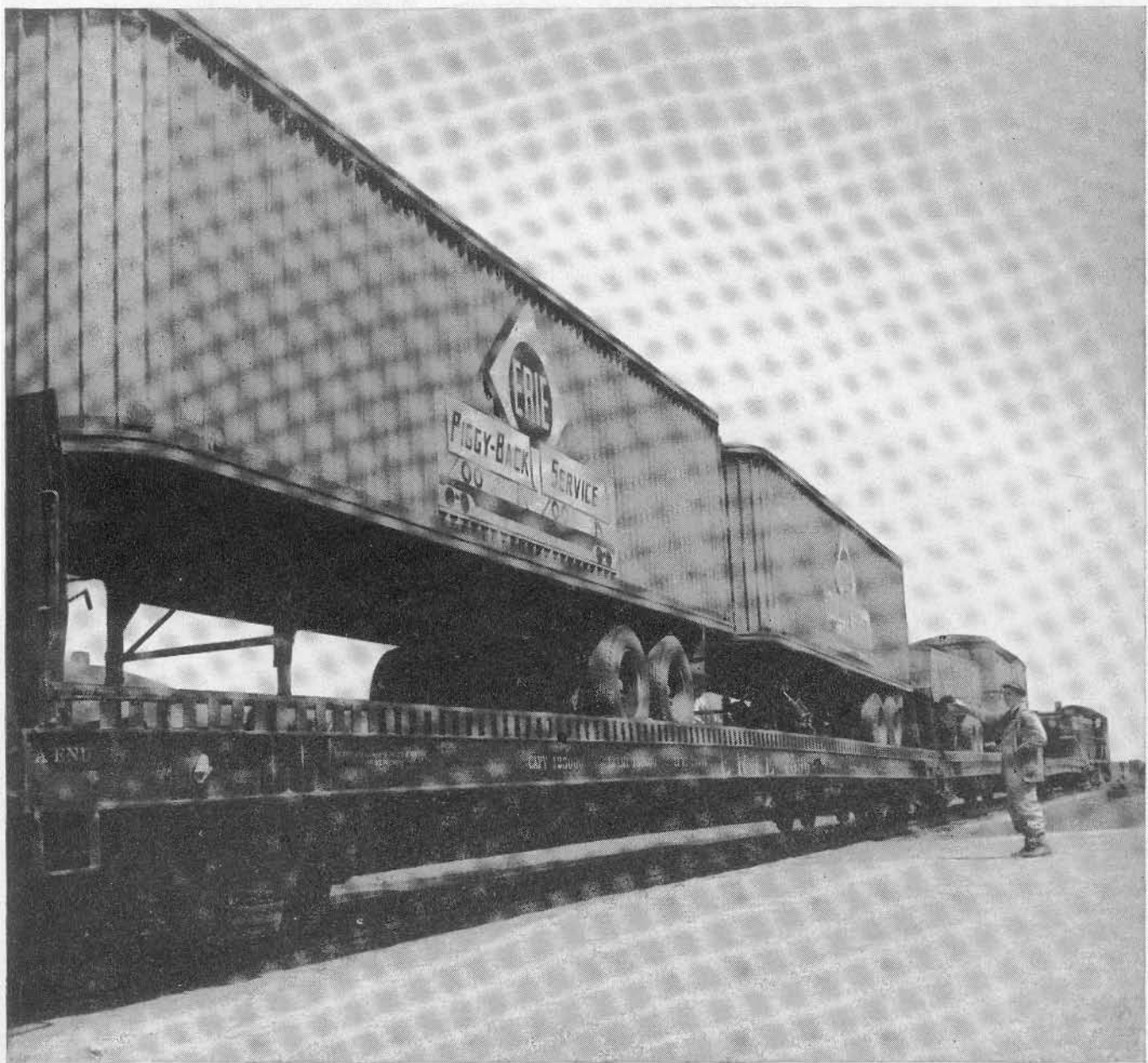


Mayari R makes it lighter... stronger... longer lasting



Piggy-Back service on the Erie

The Erie was an early member of the growing group of railroads that are speeding highway truck-trailers over the rails. Fifty 75-ft flat cars like those above were recently built by Bethlehem especially for Erie Piggy-Back service.

Such heavy lading on cars of such unusual length called for something special in construction. That something is Mayari R high-strength, low-alloy steel. Because Mayari R is half again as strong as carbon steel, it endowed load-bearing members with much greater strength without excessive weight. The use of this versatile steel actually held the weight of Erie's "King-Size Flats" down to 79,000 lb.

Mayari R offers advantages in many railroad applications. Its superior resistance to corrosion, impact, battering and

abrasion — along with its great strength — make it an ideal choice for cars, locomotives, bridges, blast plates. Railroad shop men find that Mayari R can be welded and worked readily by using the ordinary shop methods. It holds paint up to 80 pct longer than carbon steel.

Catalog 353 contains the full Mayari R story, with one section devoted entirely to picture-stories of railroad uses. A copy of this catalog is yours for the asking, from the Bethlehem district office that is nearest you.

BETHLEHEM STEEL COMPANY
BETHLEHEM, PA.

On the Pacific Coast Bethlehem products are sold by Bethlehem Pacific Coast Steel Corporation. Export Distributor: Bethlehem Steel Export Corporation

