

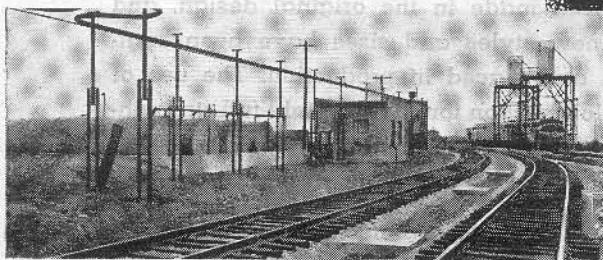
Like Most Railroads...

The "ERIE" chooses Bowser

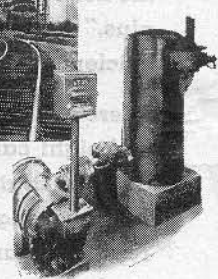


At the modern shops of the ERIE at Marion, Ohio Diesel fuels and lube oils are handled efficiently and safely with Bowser Systems.

DIESEL FUELING and LUBE OIL SYSTEMS FOR SPEED, ACCURACY, CONVENIENCE

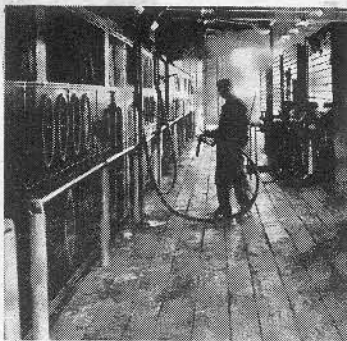


The Bowser Meter with Printing dial, located in the pump house, above, provides accurate measurement and a printed record of every fueling operation.



Keep 'em rolling! Faster schedules . . . more frequent runs . . . greater comfort—those are the railroads answers to the challenge of changing America's transportation habits. In the Dieselized era . . . just ahead . . . speed in fueling, accurate control of costs, dependable operating and maintenance data will be of prime importance in efficient operation. That's why many roads are looking ahead in planning fueling and lube oil facilities . . . and why they are calling in Bowser to help them. A staff of trained engineers, experienced in designing individualized systems, is ready to serve you at any time, without cost or obligation, in the proper selection of equipment for bulk handling and dispensing of fuels or lube oils.

LUBE OIL SERVICE



Lube oils, accurately measured by a Bowser meter, are placed in the engines at this serving center.

Your Copy . . .

Of the Bowser Catalog of equipment for storing and dispensing Diesel fuel and lube oils . . . and of time-proved equipment for handling liquids in railroad oil houses is ready. If you do not have a copy, a note will bring one immediately.



BOWSER, INC.
FORT WAYNE, INDIANA



PIONEER MAKER OF OIL HOUSE, FUELING & LUBE OIL SYSTEMS