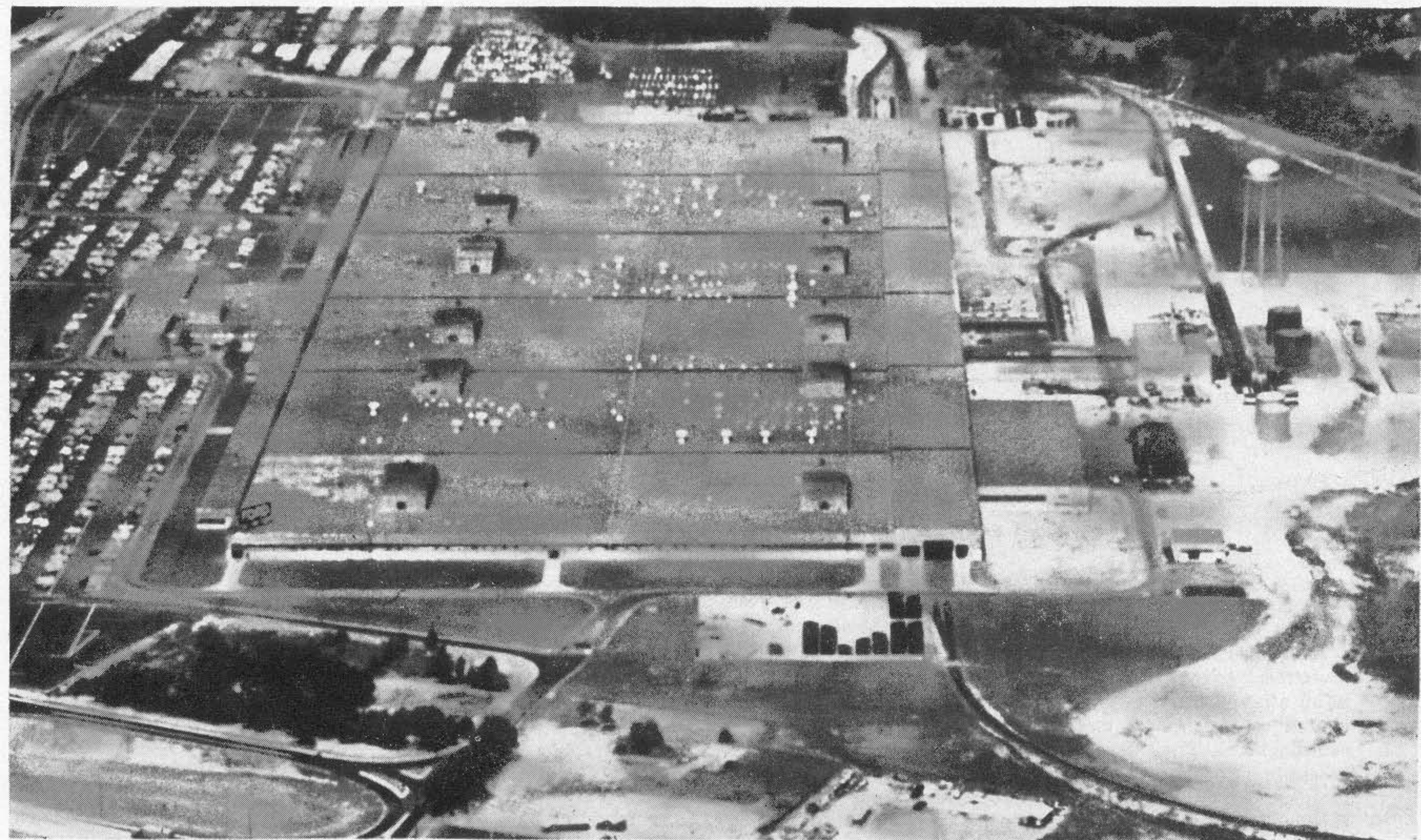


YOUR NEW PLANT WILL GROW IN THE ERIE AREA



## A Salute to FORD from the ERIE

the Erie is proud to serve Ford's biggest assembly plant at Mahwah, N.J.

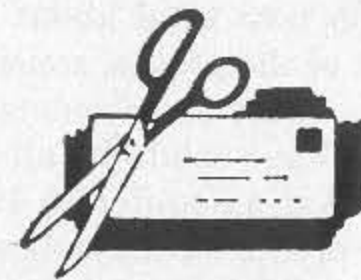
**T**HE Ford Division's new plant at Mahwah will turn out cars for the eastern states market area and the export trade. It is the largest single assembly plant of the 16 the Ford Division of the Ford Motor Co. operates throughout the country—and it's on the Erie!

Among the features of this modern plant is the relatively small building area needed for inventory of parts. The dependable Erie Railroad, which serves the plant exclusively, delivers parts from various manufacturing plants on schedule as needed to feed the giant assembly line. In effect,

the Erie is part of the production line. Dependable rail transportation is one of the many advantages of building your new plant in the Erie Area, where a third of America's people live, work and buy. Choice sites that pay off for industry are available. Mail the coupon below.

# Erie Railroad

SERVING THE HEART OF INDUSTRIAL AMERICA



D. M. Lynn, Assistant Vice President  
Industrial Development—Room 527-E, Erie Railroad  
Midland Building, Cleveland 15, Ohio

Dear Sir: Please furnish us, in strict confidence, additional information about the plant sites described above.

Name \_\_\_\_\_

Title \_\_\_\_\_ Company \_\_\_\_\_

Address \_\_\_\_\_

City \_\_\_\_\_ Zone \_\_\_\_\_ State \_\_\_\_\_

