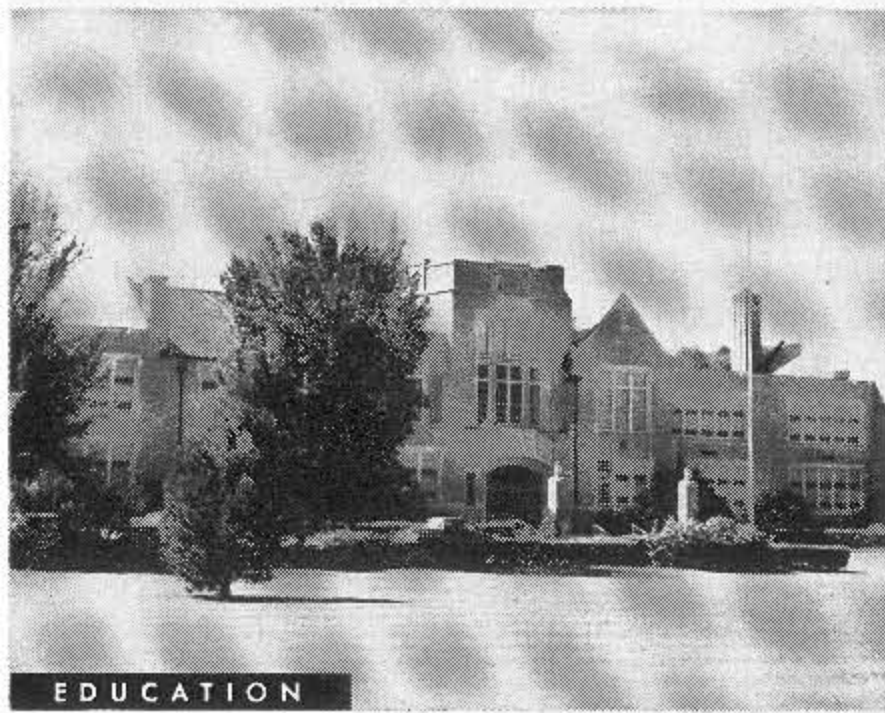
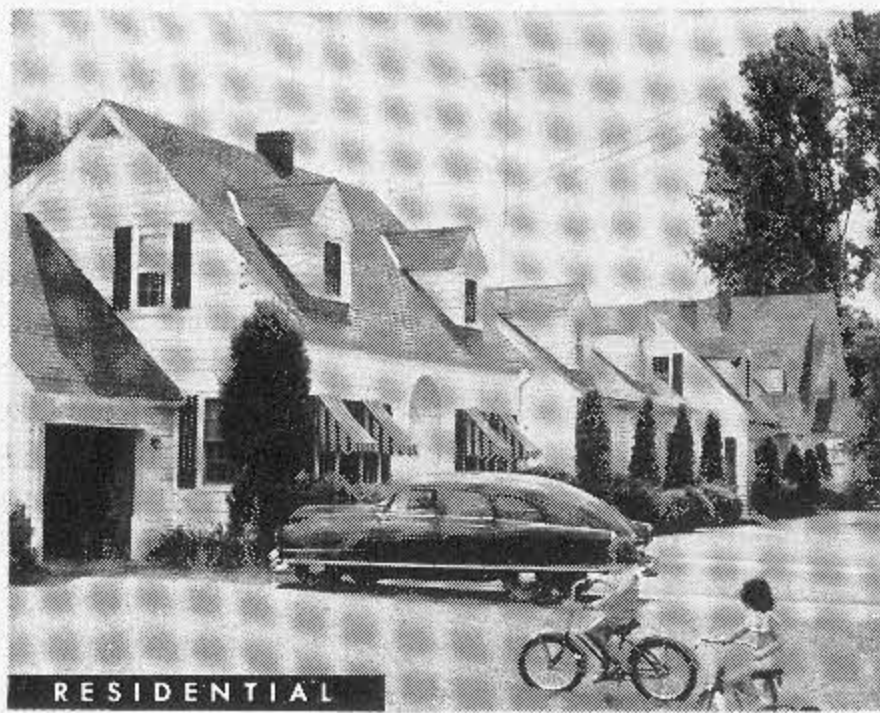


# YOUR NEW PLANT WILL GROW IN THE ERIE AREA



EDUCATION



RESIDENTIAL



RECREATION



INDUSTRY

## Industry "discovers" the middle-sized town

● Yet only recently has industry come to appreciate fully the many advantages of locating their new plants in the middle-sized town.

These ideal communities offer better living conditions—a fuller social life—richer recreational facilities. All these appeal to executive personnel, office employees and plant workers alike.

Another advantage: these middle-sized communities fit in perfectly with the Government's Dispersal Plan for industry.

The Erie Area is rich in these middle-sized towns and serves the nation's largest single market. Here one-third of America's people live, work and buy. Raw materials, production and markets are close together.

Industry is served by the dependable Erie Railroad which connects direct with New York Harbor for export business, and offers unsurpassed service between New York and Chicago and nationwide by connecting railroads.

# Erie Railroad

SERVING THE HEART OF INDUSTRIAL AMERICA



MAIL COUPON TODAY!



D. M. Lynn, Assistant Vice President  
Industrial Development • Room 527-F, Erie Railroad  
Midland Building, Cleveland 15, Ohio

Dear Sir: We are interested. Please send us your Specification Card on which we can list our needs.

Name .....  
 Title ..... Company .....  
 Address .....  
 City ..... Zone ..... State .....