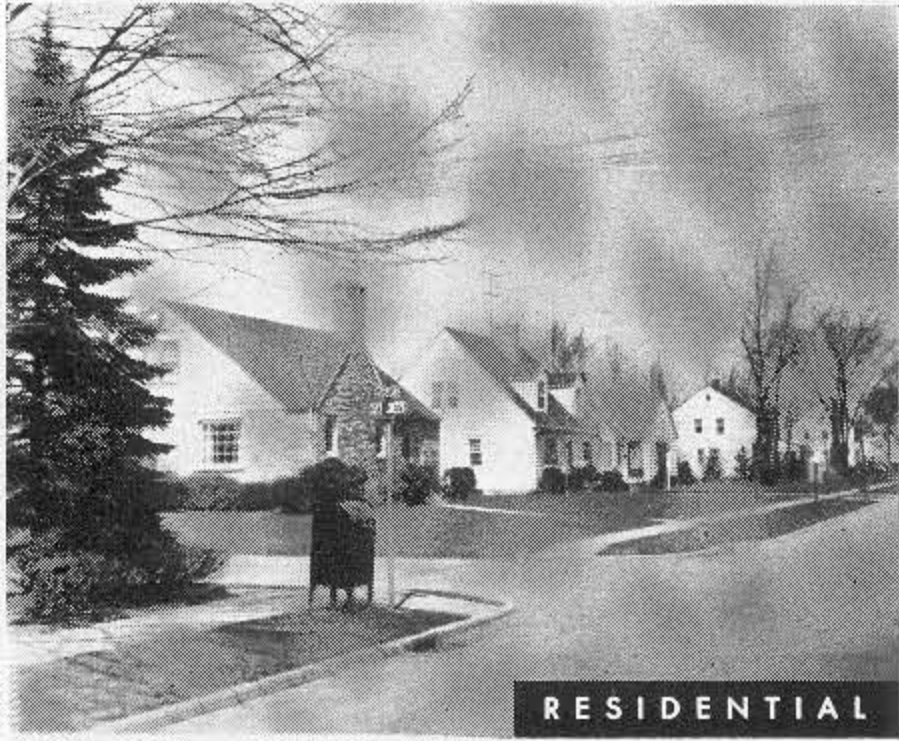


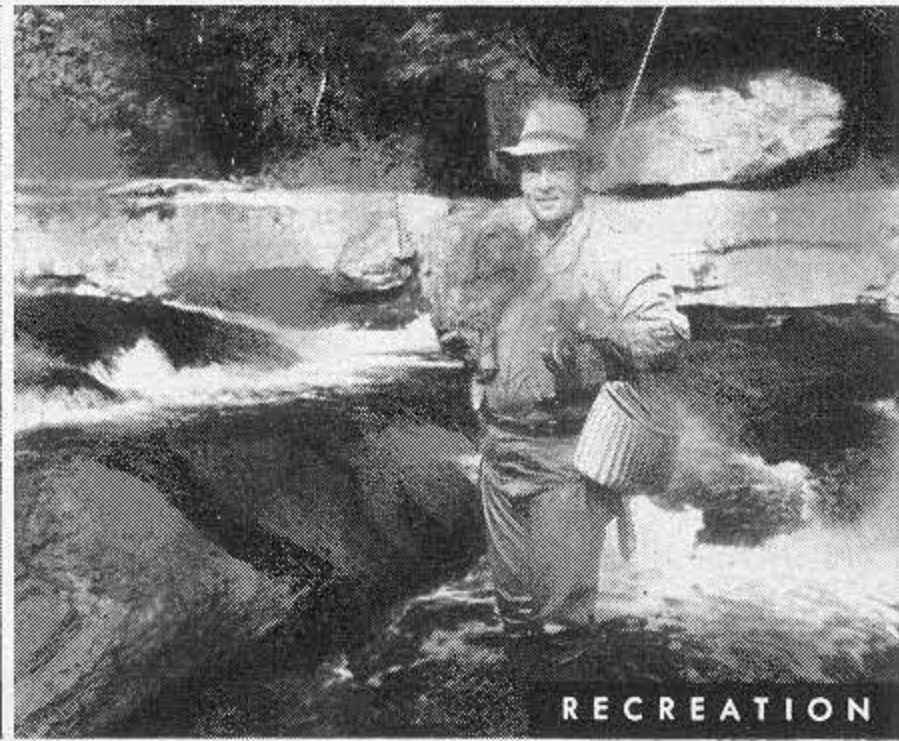
YOUR NEW PLANT WILL GROW IN THE ERIE AREA



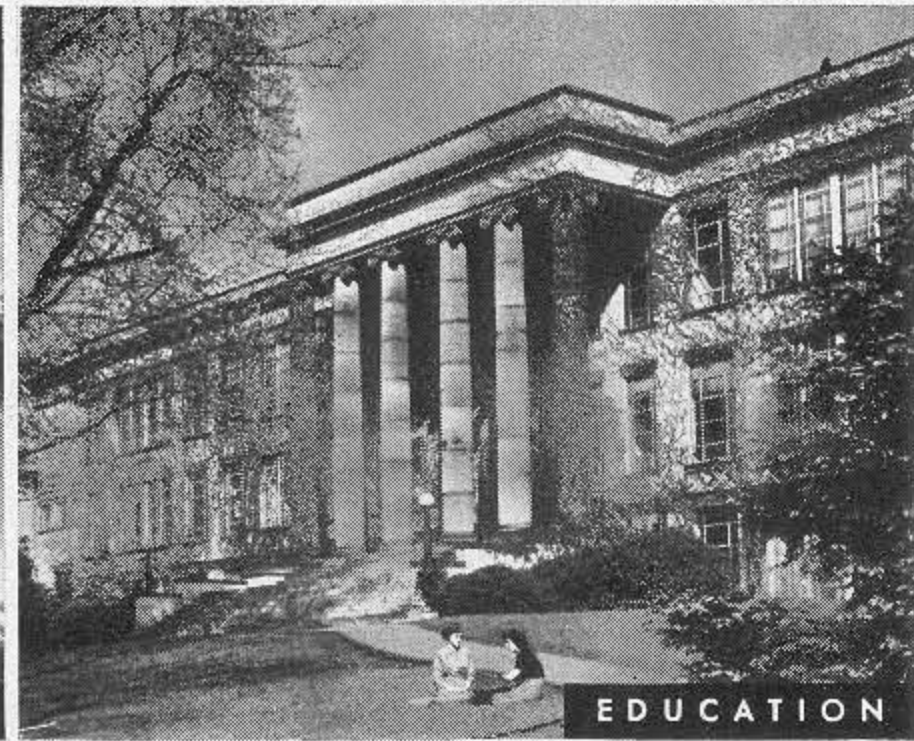
INDUSTRY



RESIDENTIAL



RECREATION



EDUCATION

Here's the middle-sized town — right site for your plant!

● Where are the new plants going? Figures show that the middle-sized town is getting the major share because of its opportunities for better living for all personnel.

These pictures from middle-sized towns in the Erie Area, give you some idea of their better life. Their social and recreational facilities make for better human relations—an intangible that finds its way into the company's balance sheet.

Then, of course, industry has room to grow in these middle-sized towns in the Erie Area that fit in with the Government's Dispersal Program.

The Erie Area is in the heart of the nation's largest single market. One-third of America's people live,

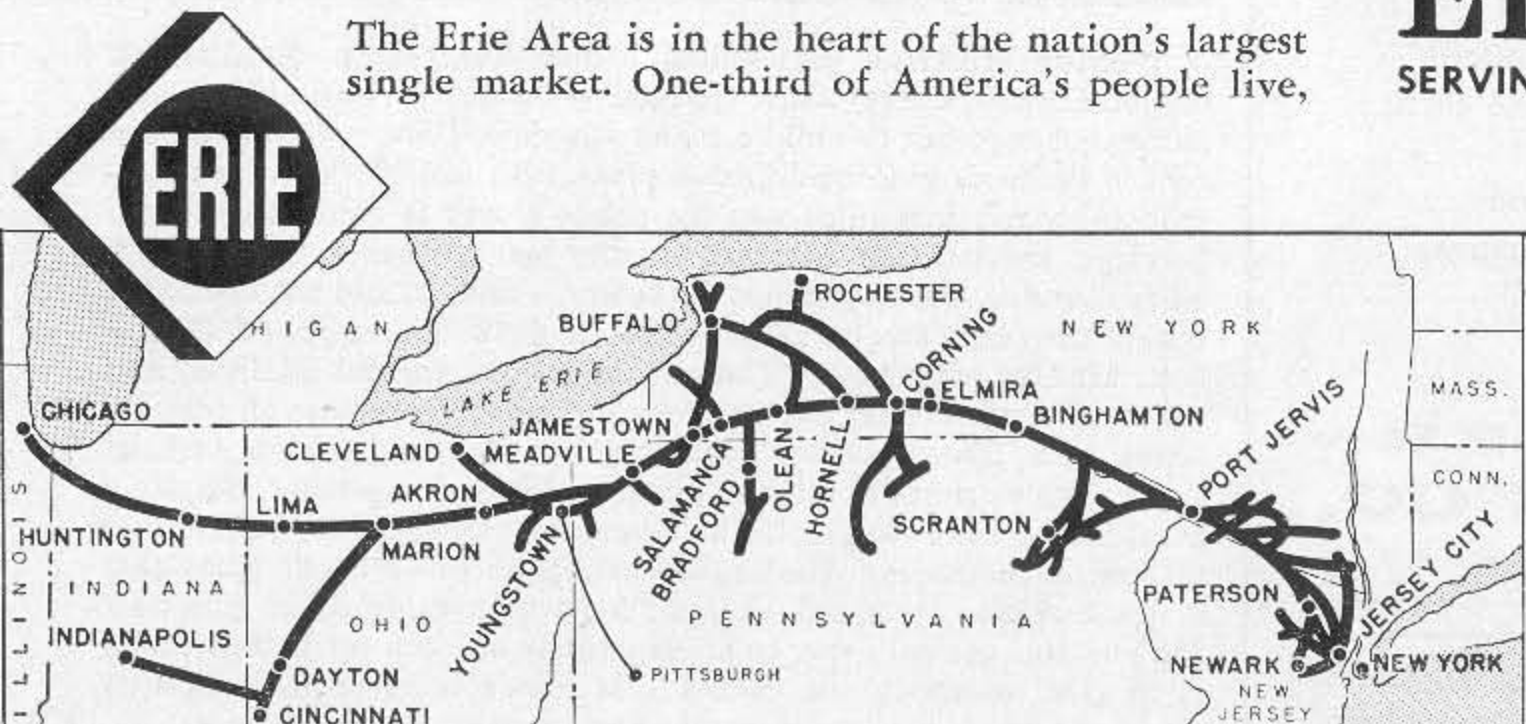
work and buy here. Raw materials, production and markets are close together.

Industry is served by the dependable Erie Railroad which connects direct with New York Harbor for export business and offers unsurpassed service between New York and Chicago and nationwide by connecting railways.

Our experienced personnel will be glad to discuss desirable locations with you—in strict confidence, of course.

Erie Railroad

SERVING THE HEART OF INDUSTRIAL AMERICA



MAIL COUPON TODAY!



D. M. Lynn, Assistant Vice President
Industrial Development, Room 527-E, Erie Railroad
Midland Building, Cleveland 15, Ohio

Dear Sir: We are interested. Please send us your Specification Card on which we can list our needs.

Name _____
 Title _____ Company _____
 Address _____
 City _____ Zone _____ State _____