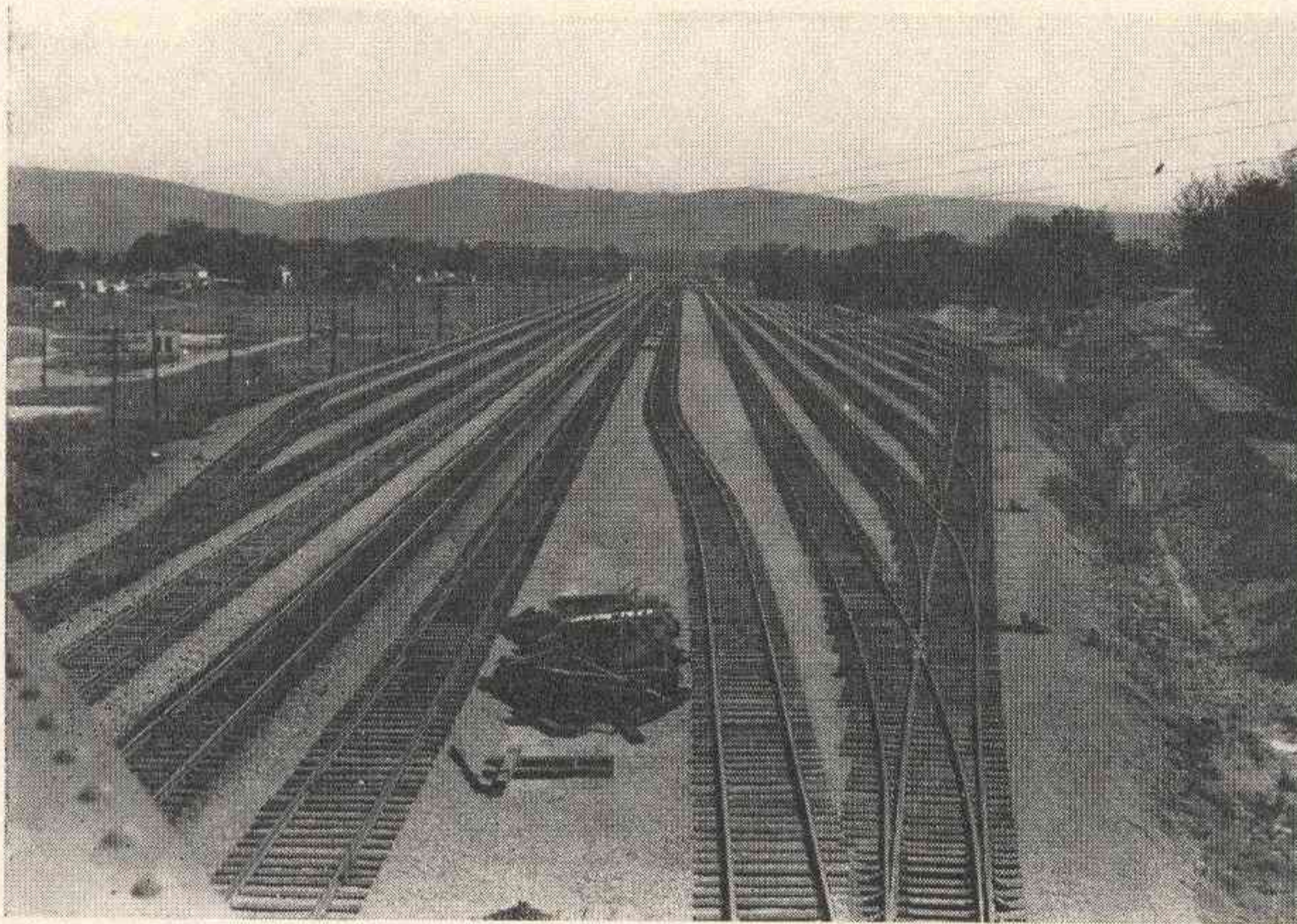


THE ERIE RELOCATES AT CORNING, N.Y. . . .



. . . in a \$12-million project which involved seven miles of new line through the northern outskirts of the city, new passenger and freight stations, a new yard, and elimination of 25 grade crossings. The new station, functional as well as scenic in design, and served by wide driveways and a large parking lot, is shown above; the new Gang Mills freight yard, adjacent to the Tioga river, at the left; and the route of the old and new lines and other new facilities, below. The new passenger station makes generous use of glass, as a tribute to Corning's recognized leadership in the glass industry.

